



Resources

Find your hub

Events

March

News and updates

Welcome, this is where we'll share news about the programme and links to resources we think you may find useful.

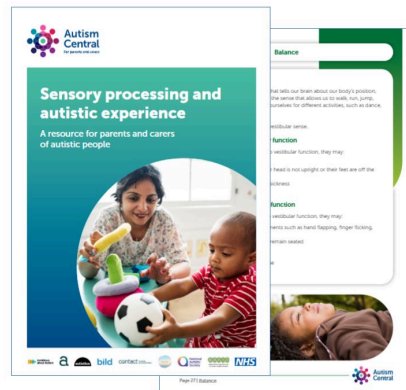


Autism Central

Sensory processing resources

Login to the website to read the PDF handbook on sensory processing differences. Learn more about processing, self-advocacy, tips on supporting autistic people and a *sensory profile template*.

Sensory processing





Jargon buster

A new resource that explains many common phrases used in education settings and by local authorities. You can read the guide when you login and can refer back to it when working in partnership to support your child or young person.

[Jargon buster](#)

Book a one-to-one

Find help from your regional hub.

[Find your hub](#)

Tell us what you think

Please help us to improve by giving us your feedback about the website.

To thank you, there is draw for a £50 Amazon voucher which you can enter at the end of the survey.



[Take the survey](#)

Next month...

Find out more about sensory processing in a new series of podcasts, launching in April.





Autism Central is designed to help families learn more about autism and how to navigate support.



Autism Central is a peer education programme, commissioned by NHS England.

Autism Central
c/o National Autistic Society, 393
City Road, London, EC1V 1NG,
United Kingdom
www.autismcentral.org.uk

You received this email because you signed up on the Autism Central website for news and updates.

[Unsubscribe](#)

Contact us

